

IGW/922-G/U

How to Change the SIM Card

microHowTo



SSV Embedded Systems

Dünenweg 5
D-30419 Hannover
Phone: +49 (0)511/40 000-0
Fax: +49 (0)511/40 000-40
E-mail: sales@ssv-embedded.de

Manual Revision: 1.0
Date: 2010-03-23

CONTENT

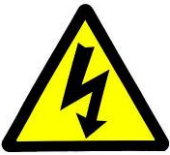
| | | |
|-----|-----------------------------|----|
| 1 | INTRODUCTION..... | 3 |
| 1.1 | Safety Guidelines | 3 |
| 1.2 | Conventions | 3 |
| 2 | CHANGING THE SIM CARD | 4 |
| | Step 1..... | 4 |
| | Step 2..... | 5 |
| | Step 3..... | 6 |
| | Step 4..... | 7 |
| | Step 5..... | 8 |
| | Step 6..... | 9 |
| | Step 7..... | 10 |
| 3 | HELPFUL LITERATURE..... | 12 |
| | CONTACT | 12 |
| | DOCUMENT HISTORY..... | 12 |

1 INTRODUCTION

This document describes how to change the SIM card of the socket modem inside the IGW/922-G and IGW/922-U.

1.1 Safety Guidelines

Please read the following safety guidelines carefully! In case of property or personal damage by not paying attention to this document and/or by incorrect handling, we do not assume liability. In such cases any warranty claim expires.



ATTENTION: Observe precautions for handling – electrostatic sensitive device!

- Discharge yourself before you work with the device to avoid damages, e.g. by touching a heater of metal.
- Stay grounded while working with the device to avoid damage through electrostatic discharge.
- Remove **ALL** cables from the device before you open it, especially the power cable.

1.2 Conventions

| Convention | Usage |
|---------------|--|
| bold | Important terms |
| <i>italic</i> | Filenames, user inputs |
| monospace | Pathnames, program code, command lines |

Table 1: Conventions used in this Document

2 CHANGING THE SIM CARD



ATTENTION: Please follow the safety guidelines in **chapter 1.1** before you start!

Step 1

Use a screwdriver to push the two lockings on top of the case open like shown in figure 1. Please be careful and do not push too strong!

Pay attention with the two screw terminals and do not remove them (red arrows)!

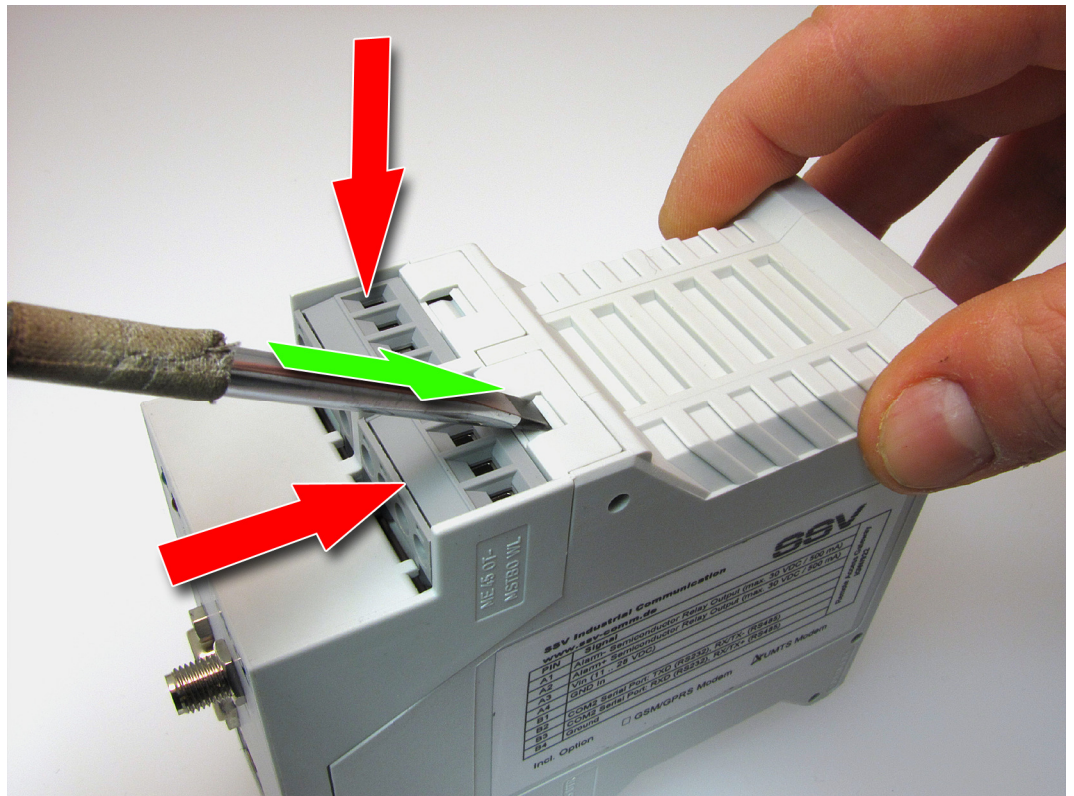


Figure 1: Opening the case with a screwdriver

Step 2

Now use the screwdriver to push the two lockings at the bottom of the case open like shown in figure 2. Please be careful and do not push too strong!

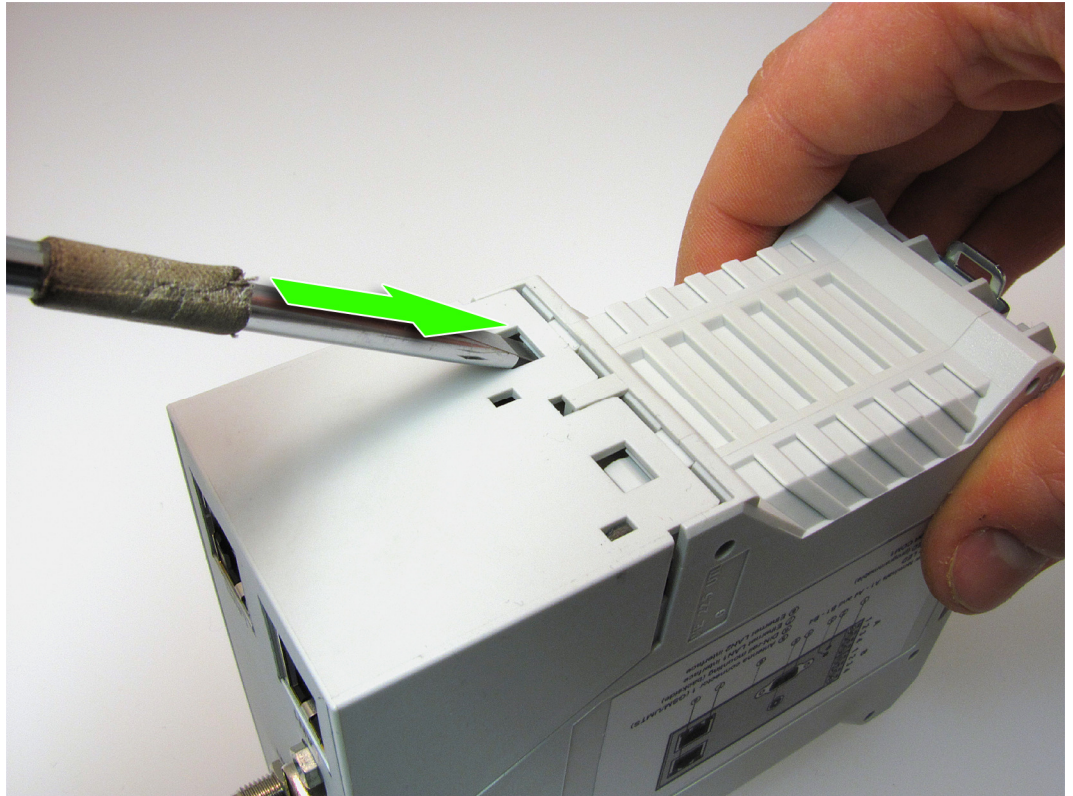


Figure 2: Opening the case with a screwdriver

Step 3

Now pull the two parts of the case apart like shown in figure 3.

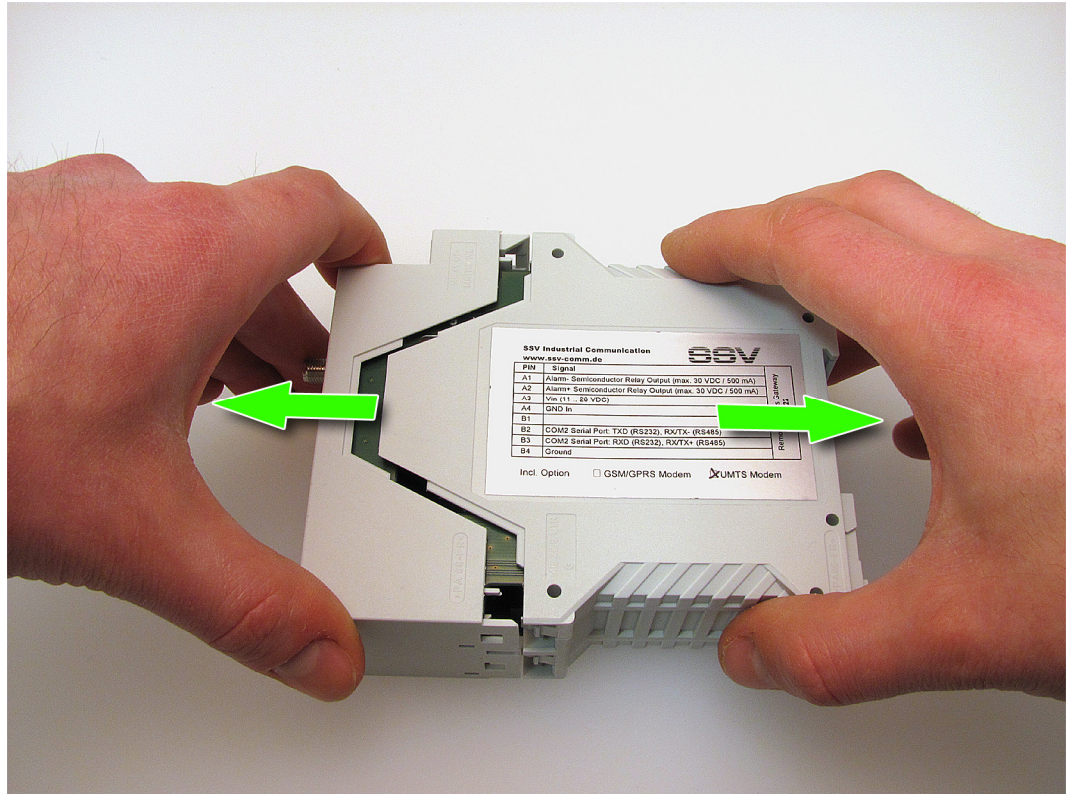


Figure 3: Pulling the case apart

Step 4

You now can see the SIM card holder. Unlock the holder by gently pushing its top part like shown in figure 4.

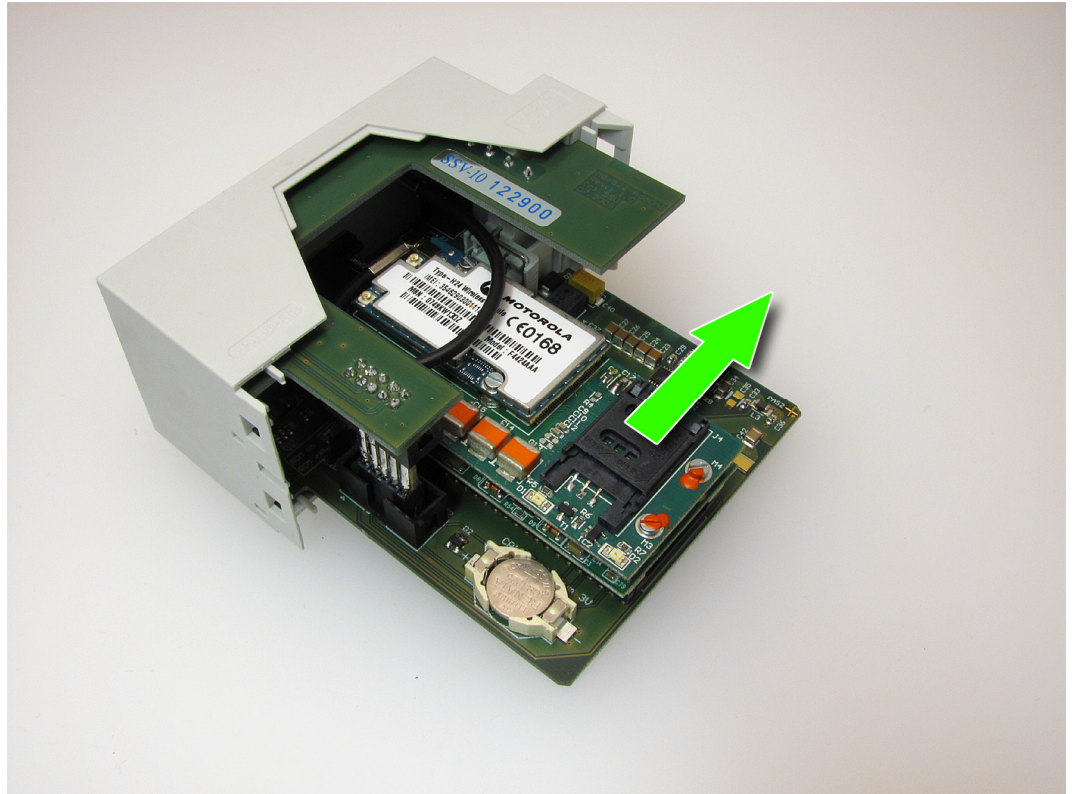


Figure 4: Unlocking the SIM card holder

Step 5

Now flip the holder open and insert the new SIM card into the holder in the same orientation like shown in figure 5.

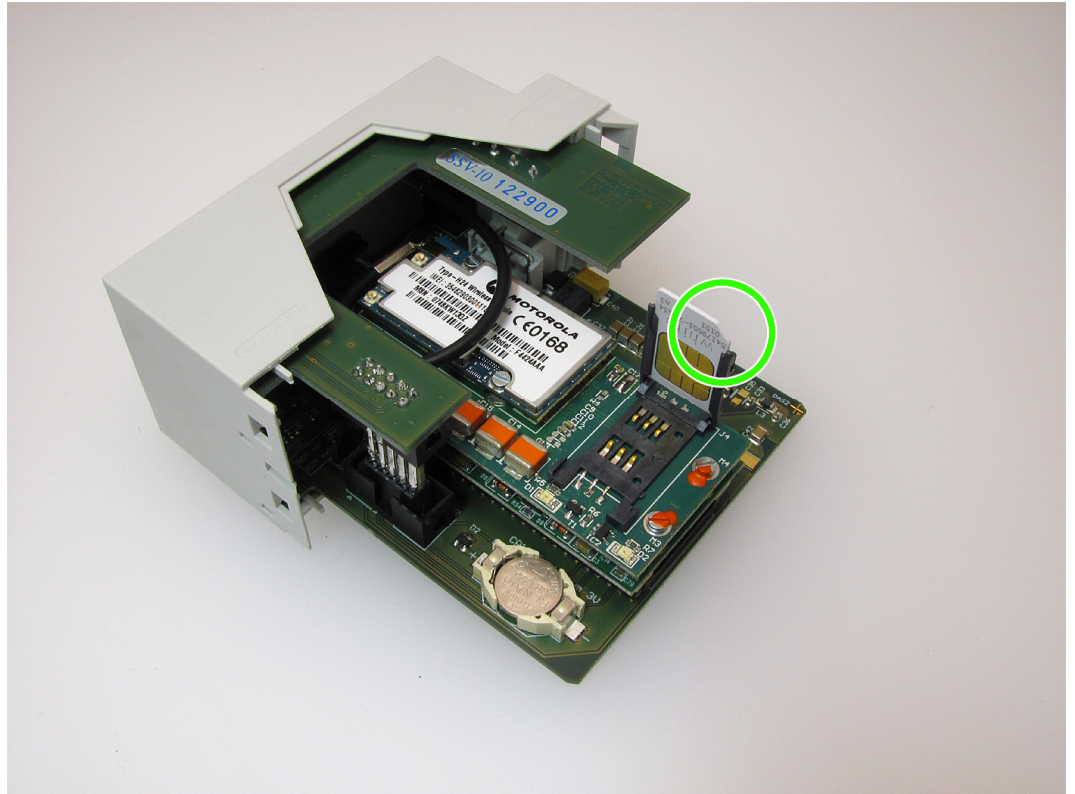


Figure 5: Inserting a new SIM card

Step 6

Close the SIM card holder and gently push the top part like shown in figure 6 to lock the holder again.

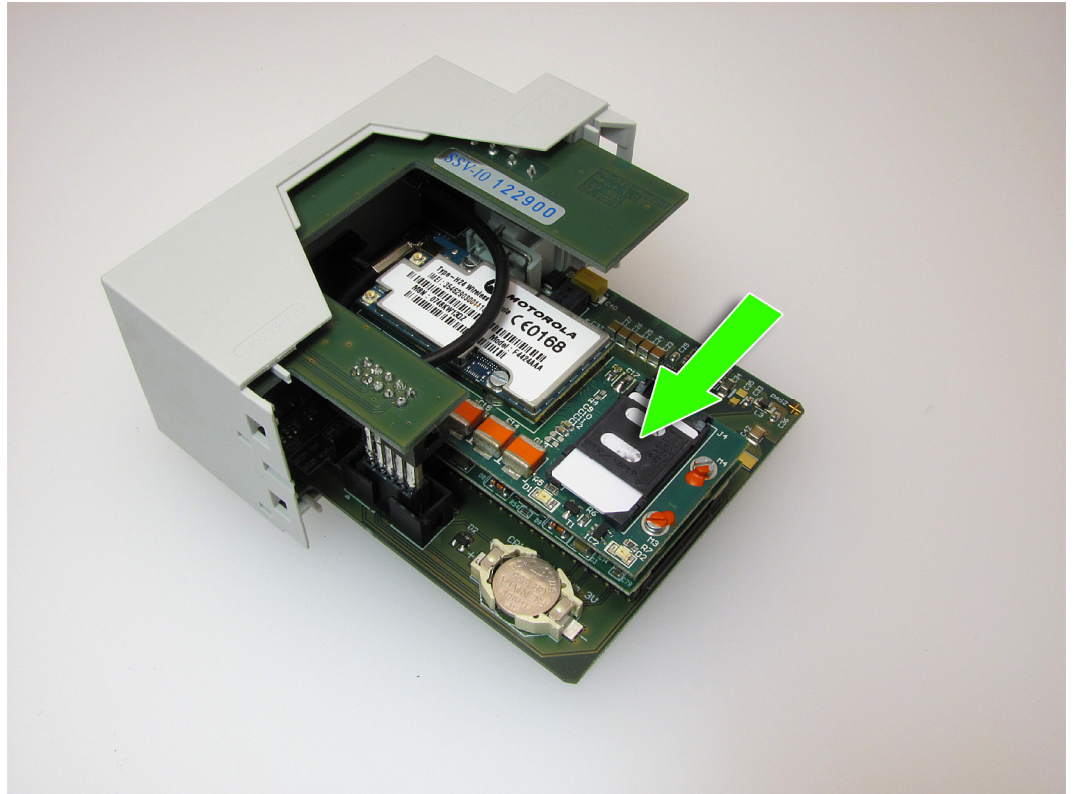


Figure 6: Locking the SIM card holder

Step 7

To close the case it is **very important** to carefully slide the boards into the bearings of the case and push the two parts gently together. Figure 7 shows the top bearings.

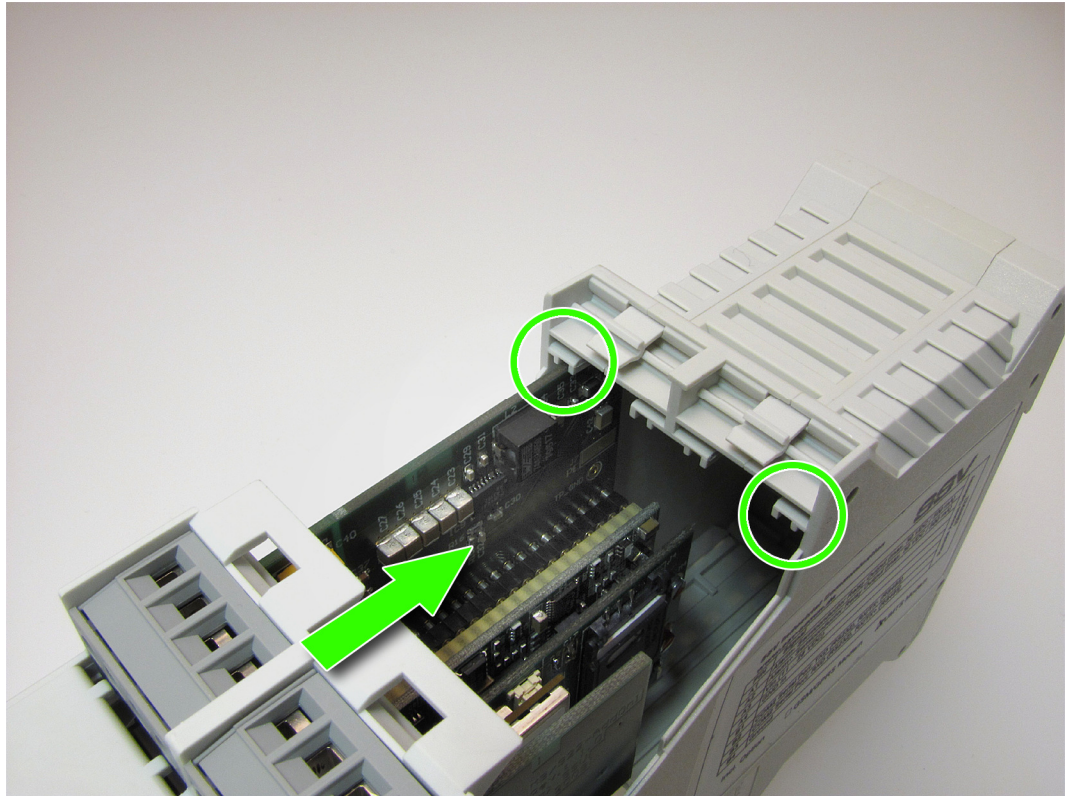


Figure 7: Sliding the boards into the top bearings

Figure 8 shows the bottom bearings.

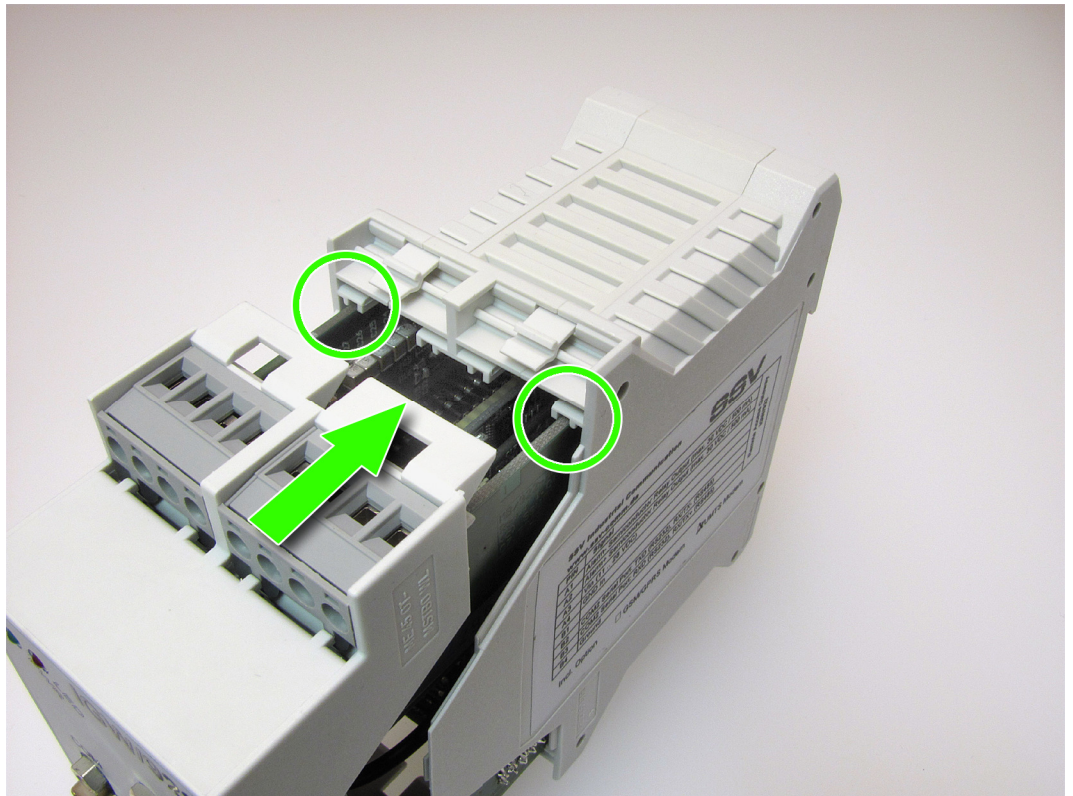


Figure 8: Sliding the boards into the bottom bearings

Just push the case together until the four lockings snap in.

That's all!

3 HELPFUL LITERATURE

- IGW/922 hardware reference manual

CONTACT

SSV Embedded Systems

Dünenweg 5

D-30419 Hannover / Germany

Phone: +49 (0)511/40 000-0

Fax: +49 (0)511/40 000-40

E-mail: sales@ssv-embedded.de

Internet: www.ssv-comm.de

Support: www.ssv-comm.de/forum

DOCUMENT HISTORY

| Revision | Date | Remarks | Name |
|----------|------------|---------------|------|
| 1.0 | 2010-03-23 | first version | WBU |

The content of this document can change any time without announcement. There is taken over no guarantee for the accuracy of the statements. The user assumes the entire risk as to the accuracy and the use of this document. Information in this document is provided 'as is' without warranty of any kind. Some names within this document can be trademarks of their respective holders.

© 2010 SSV EMBEDDED SYSTEMS. All rights reserved.